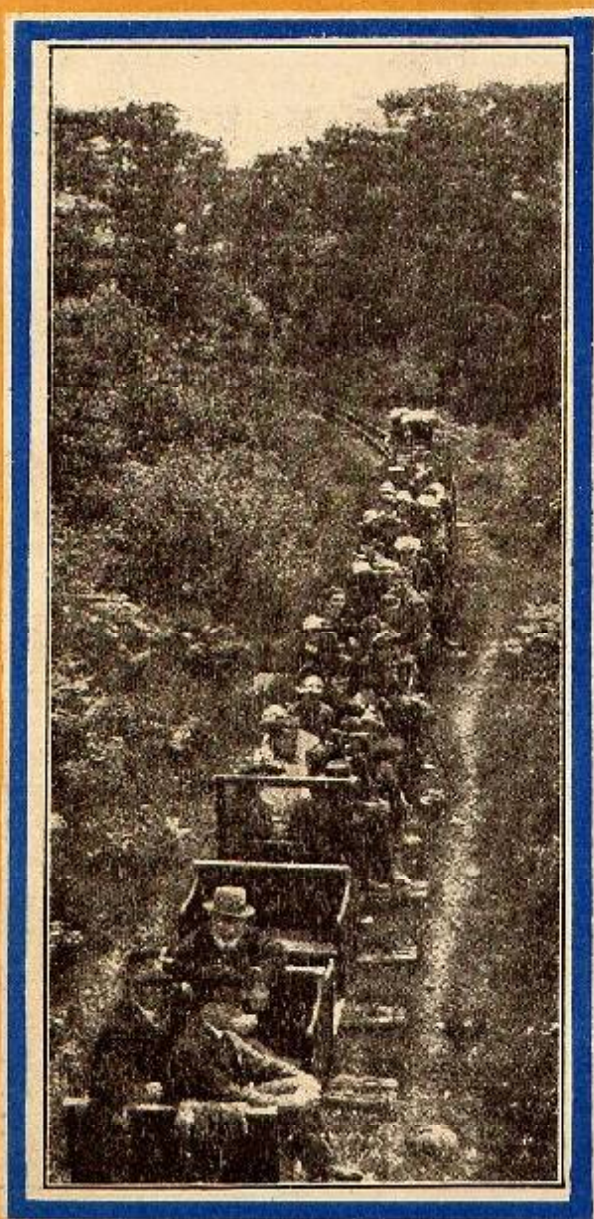


THE RAVENGLASS AND
ESKDALE RAILWAY



**THE
SMALLEST
RAILWAY
IN THE
WORLD.**



VISIT . . . ESKDALE

By the . . .
World's Smallest
Railway . . .

— The Ideal Spot for a Pleasant Day's Outing. —

R. & E. Rly. Narrow Gauge Trains run in connection with
the L. M. & S. Rly. (Furness Section) Services
at Ravenglass Stations.

SPECIAL FACILITIES PROVIDED FOR PARTIES.

Combined Rail and Motor Tours round Wastwater Lake Daily
in Summer Season.

Time Tables and Descriptive Pamphlet on application—

R. PROCTOR MITCHELL, *General Manager,*
Ravenglass Station, Cumberland.

BECKFOOT GRANITE

HARD WEARING.

FREE FROM DIRT AND FAULTY STONE.

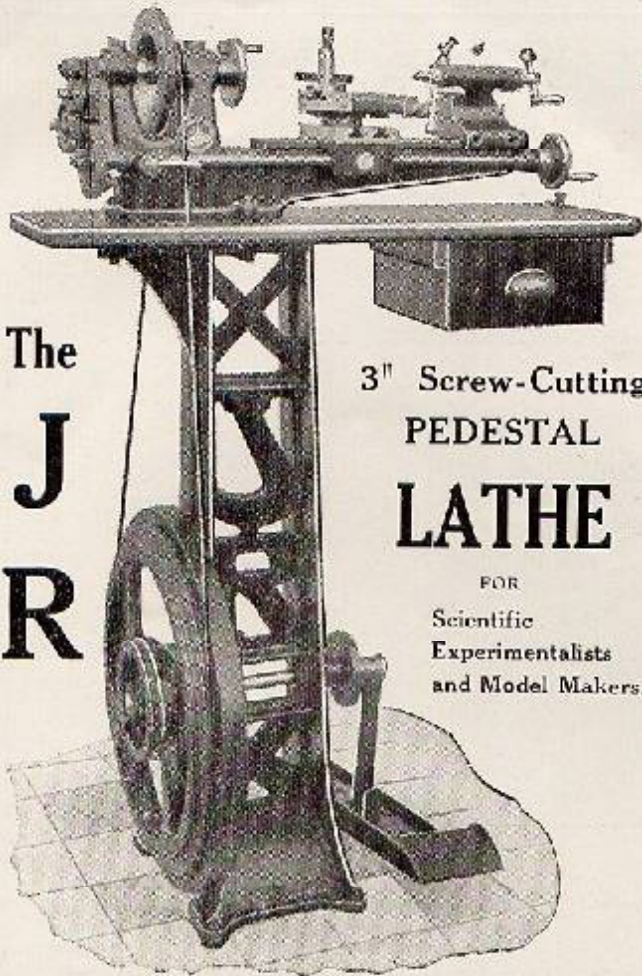
The Beckfoot Quarries, Ltd., supply direct from their own Quarry
the **FINEST CUMBERLAND GRANITE**
as Roadstone, Sets, Kerbs and Chippings.

Crushing Stress by National Physical Laboratory Test
25,000 lbs. PER SQUARE INCH

For Quotations and Samples (prices free on rail L.M.S.Rly., Ravenglass Station) apply—

BECKFOOT QUARRIES, Ltd.,
12, Scotch Street, WHITEHAVEN.

The
J
R



3" Screw-Cutting
PEDESTAL
LATHE

FOR
Scientific
Experimentalists
and Model Makers.

THE "J.R." Screw-Cutting Lathe has been designed for modelmakers, home workers, scientific and wireless experimentalists.

It is the most accurate and useful tool at the price. The Lathe has an overall guarantee to $\frac{1}{100}$ th of an inch.

It is light yet rigid; it has a delicacy of touch yet great power.

It will turn a pin $\frac{1}{32}$ in. diameter, a soft cast-iron wheel 6in. diameter or reduce a $1\frac{1}{2}$ in. steel bar to $1\frac{1}{4}$ in. diameter at one cut.

It is rapid in action: the use of innumerable spanners has been entirely eliminated.

It can be equipped for a power drive, or as a bench lathe and all kinds of useful accessories are made to suit it.

Send Stamped Envelope for Prices and Specification

To the Makers: **Jackson-Rigby Engineering Co., Ltd.,**

Station Road,

SHALFORD (Near Guildford), **SURREY.**

THE WOOLPACK INN

At **BOOT** (Eskdale), **CUMBERLAND.**

THE RECOGNISED HEADQUARTERS OF THE
ROCK AND FELL-CLIMBING CLUB

This Ancient Inn is Surrounded by Scawfell, Scawfell Pikes, Bow Fell, Harter Fell, Eskdale Falls, Birker Force and Stanley Ghyll.

The Upper Eskdale is considered by Visitors as the finest Valley in the Lake District.

Tourists and Climbers will find at the "WOOLPACK" every
:: :: :: comfort, cleanliness and excellent food. :: :: ::

FOR FULL PARTICULARS AND TARIFF APPLY—

Benjamin Armstrong, Proprietor.